

ridge 2000

*Integrating Observations, Analyses and
Models of Oceanic Spreading Center
Processes*

[Intro by Ken Rubin]

Portland, OR

October 29-31, 2010

ridge 2000

- What are we here to do?
- Meeting topics and organization
- Working group roles and anticipated products
- Group leader roles and reporting requirements
- Working Group Protocols and Ethical Guidelines
- Common themes from White Papers

ridge
2000

What are we here to do?



- Pull together the results of research by hundreds of people ..
- from widely different disciplines ..
- having a range of publication and data sharing styles and conventions
- to produce products
- that showcase our collective knowledge and understanding of one of *Earth's most fascinating locales*

2010 R2K Community Meeting

ridge
2000

What are we here to do?

Who ever said doing something worthwhile wasn't going to be difficult



2010 R2K Community Meeting

ridge
2000

What are we here to do?



- Celebrate our successes
- Soak in the magnitude of our accomplishments
- Appreciate the work of your colleagues

- Plan for the future



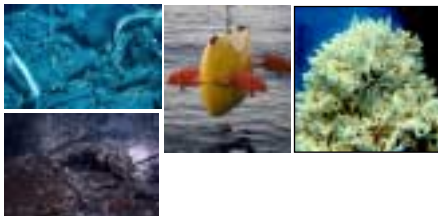
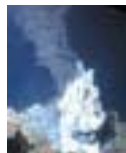
2010 R2K Community Meeting

ridge
2000

Meeting topics and organization

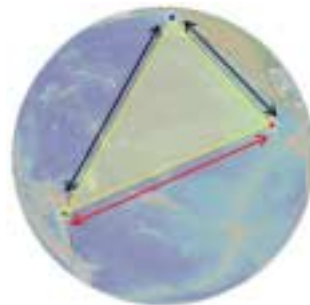
Thematic Working Groups

- * Biogeochemical processes
- * Biogeography evolution adaptation
- * Chemistry and heat fluxes
- * Crustal controls
- * Education and outreach
- * Events and responses
- * Mantle melt
- * Sensors and technologies



ISS Working Groups

- * EPR
- * Lau
- * JdF



2010 R2K Community Meeting

- A Working Group Approach to Integration and Synthesis of Mid-Ocean Ridge Studies
 - Work together
 - Achieve common goals
 - Σ total > Σ parts
 - **NEW INSIGHTS**



Workflow:

Working group ↔ plenary → groups

↕ cross group collaboration

Working group

→ define individual tasks

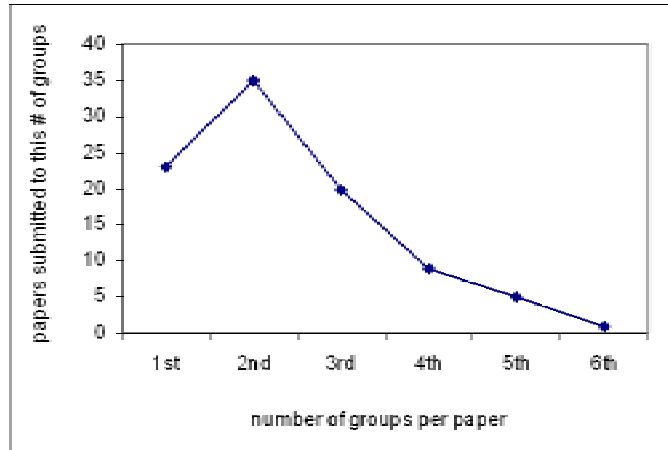
→ products

at the meeting

after

provide feedback during the meeting

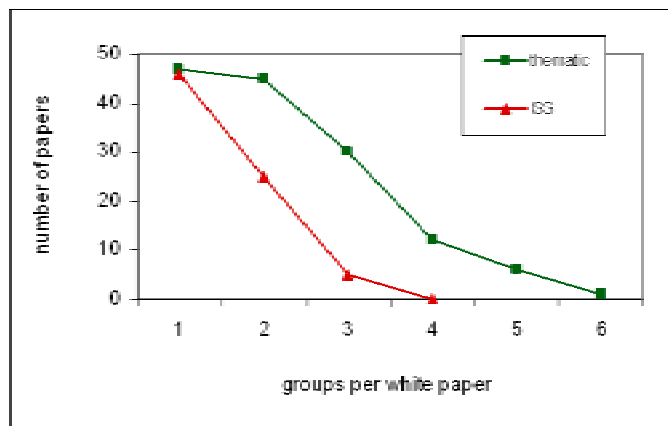
People are interested in multiple groups



Self-assigned working groups

2010 R2K Community Meeting

People are interested in multiple groups



2010 R2K Community Meeting

Systems approach:

Transdisciplinary study of an organized collection of integrated parts (or subsystems)

Synthesis:

integrating novel data sets and models to:

- address important problems within a discipline
- develop new analytical approaches and tools
- combine methods and perspectives from multiple disciplines to answer and *create* new fundamental scientific questions.



Each TWG and IWG will

- ✓ Identify one or more manuscript title(s) or alternative product(s)
- ✓ Identify target audience and venue
- ✓ For 1 or more paper, rough out an abstract, outline, list of figures, list of co-authors, preliminary reference list
- ✓ produce task list for WG members participating in the product(s).

By the end of the meeting



One size does NOT fit all

Scope of the products

- ✓ Big Picture
- ✓ Exciting
- ✓ Best of the best
- ✓ NEW INSIGHTS

What kind of paper do we want?

- ✓ Summary and synthesis for ourselves (i.e., “ridge” specialists)
- ✓ Comprehensive overview for other scientists
- ✓ Exciting highlights for the general public

2010 R2K Community Meeting



Leaders will

- Orchestrate
- Motivate
- Referee

Groups will

- Summarize proceedings
- Share results
- Keep the community updated *(during and after the meeting)*

2010 R2K Community Meeting

Participants in each Working Group are expected to operate within the ethical guidelines for collaboration and joint publication established by the Organizing Committee.

*See pdf on
the wiki*



2010 R2K Community Meeting



- Respect
- Communicate
- Listen
- Consider

2010 R2K Community Meeting

